



SWEFACT[™] Industrial impact wrench series



SW SP5112



SW SP5212



SW SP5334

The industrial impact wrenches have the newly developed revolutionary SWEFACT[™] impact mechanism, which extends the service life and reduces vibrations and noise reduced.



SWEPACT[™]

Durable. Strong. Safe.

The new industrial impact wrench series incorporates a completely new impact technology. The new SWEPACT[™] impact wrenches represent the first major innovation for over 35 years, following the development of the twin-hammer impact mechanism, and are revolutionizing the industrial impact wrench market. Thanks to the closed design of the patented SWEPACT[™] impact mechanisms extend the service life of the impact wrenches by 80 % and their maintenance intervals by 125% compared to comparable models with twin-hammer impactors.

The lubrication via a Lubrication nipples are completely eliminated. In addition, the industrial impact wrenches vibration and noise reduced. The new SWEPACT[™] industrial impact wrench series consists from three models. With one short and fast model with a working torque of 720 Nm, a compact and enduring model with 910 Nm and a large and powerful model with 1,690 Nm cover the new impact wrenches from swepro a wide range of industrial applications with screw connections.





SERVICE LIFE



LOW MAINTENANCE



LOW NOISE



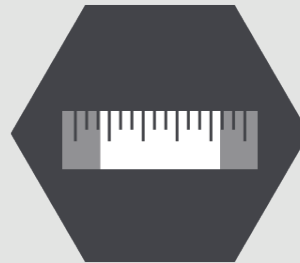
**REDUCED
VIBRATION**



STRONG



LIGHT WEIGHT



COMPACT



**SPEED CONTROL
FORWARDS/BACKWARDS**

Handling

Pleasant balance and easy handling

Our SWEPACT™ industrial impact wrench series not only has extended service life, longer maintenance intervals, reduced vibration and lower noise levels, but also a thoughtful design. The centre of gravity of the impact wrenches is located directly above the handles, thus ensuring a comfortable weight distribution. The impact wrenches do not tend to tip forward during use, thus ensuring less fatigue during work. The ergonomic soft grip lies comfortably in the user's hand and allows safe and precise guidance of the impact wrenches. Both the soft grip and the lower vibration values of the impact wrenches thus contribute to a reduction of the workload. The direction switch with step adjustment is located directly on the trigger of the impact wrench. Thanks to this well thought-out positioning, the impact wrenches are ideally suited for operation with one hand.



Long service life

80% longer service life



In contrast to the standard twin-hammer impact mechanisms available on the market, the SWEFACT™ impact mechanisms are a closed Construction. The closed SWEFACT™ impact units prevent the impact grease from escaping, so that the impact jaws are continuously lubricated. This ensures a permanent lubrication of the hammer mechanism. These two factors increase the service life of the hammer mechanism by 80%.

Low maintenance

125% extended maintenance intervals



The SWEFACT™ industrial impact wrenches are particularly low maintenance. With maintenance intervals of up to 180 hours instead of the usual 80 hours, the required maintenance is reduced by more than half. But not only the number of maintenance runs is reduced, also the maintenance itself is very easy. The SWEFACT™ impact wrenches are designed in such a way that with a little practice they can be maintained within a few minutes.

Reduced vibration

40% less vibration



The SWEPACT™ industrial impact wrench series has up to 40% less vibration. Between the vane motor and the SWEPACT™ impact wrench is a specially spring-mounted bearing with a guide pin in the middle. This pin enables concentric power transmission between the motor and the impact mechanism. The newly developed, spring-mounted and concentric guide reduces the transmission of vibration from the impact mechanism to the impact wrench and the user.

Reduced sound level

10% reduced sound level



When designing the SWEPACT™ industrial impact wrench series, special attention was paid to reducing the noise level. The use of an effective silencer reduces the noise level to 85 dB(A) and thus the working environment of the user in the long term. The closed design of the SWEPACT™ impact mechanisms also favours the reduction of the noise level.

User friendly

Right- and left-handed Operation

The proportion of left-handed people in our population is about 10%. The ergonomics of the new SWEPACT™ industrial impact wrenches are ideal for both left- and right-handed users. The new models can easily be converted to left-handed operation with one hand. This means that the same device can be used by both left- and right-handed users without sacrificing either comfort or functionality.



Technical data

SW SP5112, SW SP5212, SW SP5334

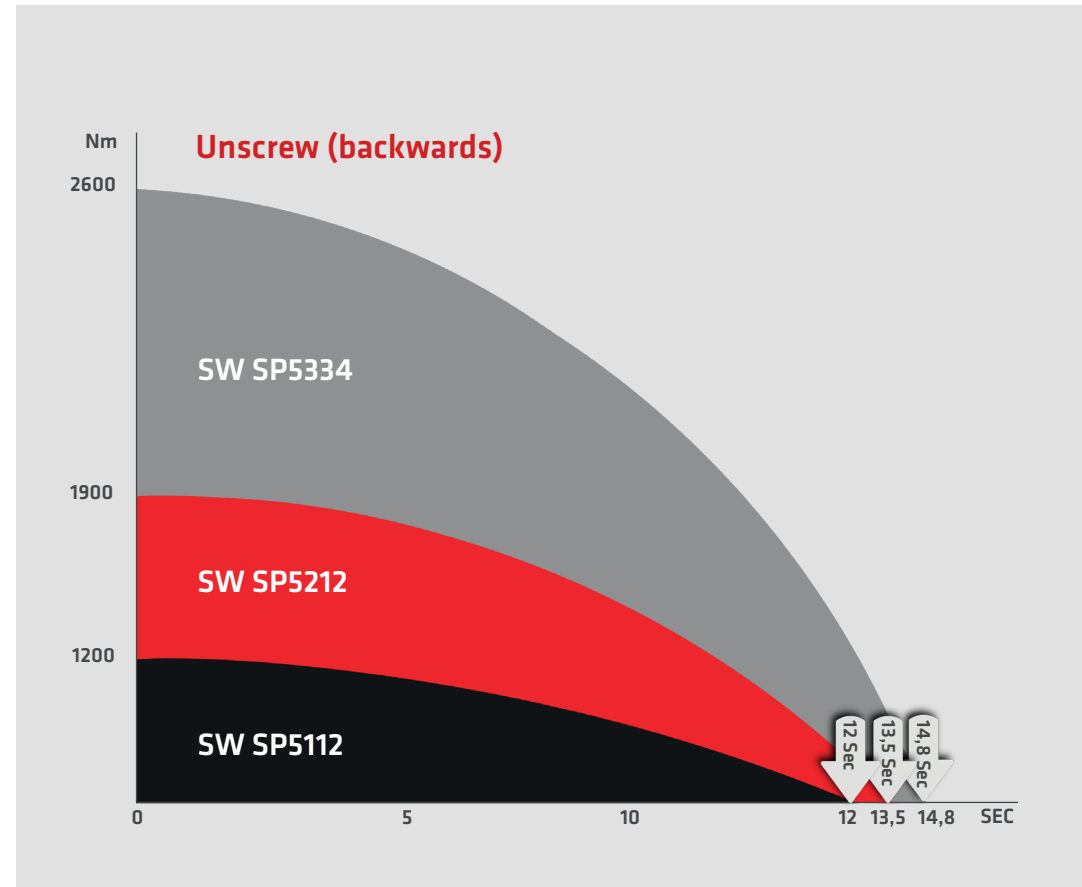
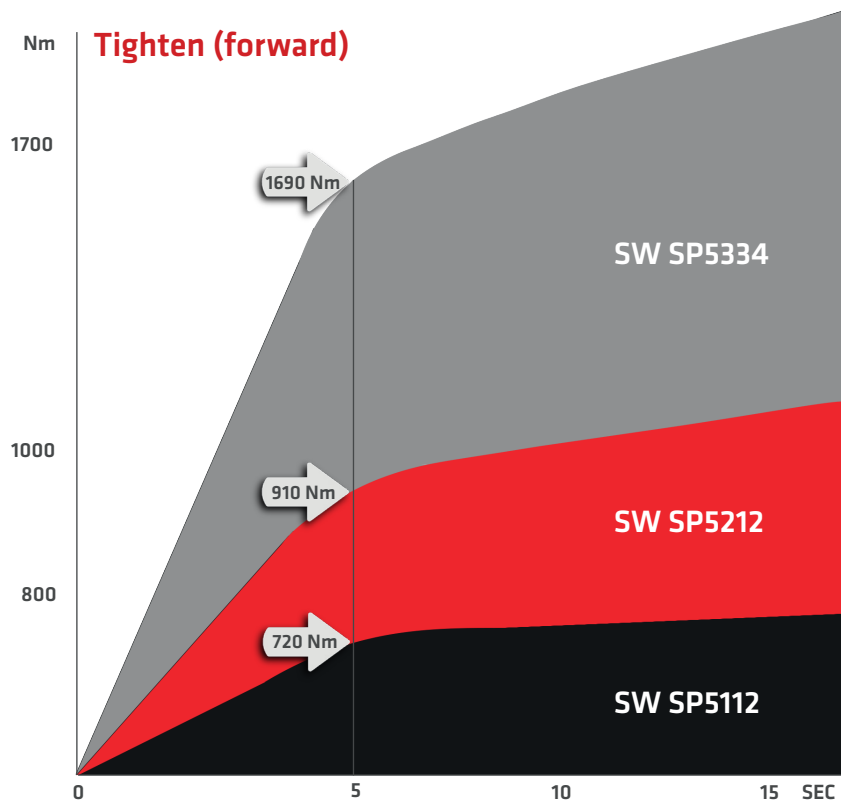


Model	Item number	Length	Sound level	Vibration	Weight	Air connection	Max. Operating pressure	Air consumption	Direction of rotation	Working torque	Max. Torque	Free Speed
		mm	dB(A)	m/s ²	kg		bar	m ³ /min		Nm	Nm	1/min
SW SP5112	785112	108	85	4,3	1,3	1/4" BSPT	6,3	0,118	2 Forward/ 1 Backwards	720	1200	9000
SW SP5212	785212	162	85	6,5	2,0	1/4" BSPT	6,3	0,161	2 Forward/ 1 Backwards	910	1850	7000
SW SP5334	785334	187	85	7,7	3,5	3/8" BSPT	6,3	0,221	2 Forward/ 1 Backwards	1690	2600	4500

Torque

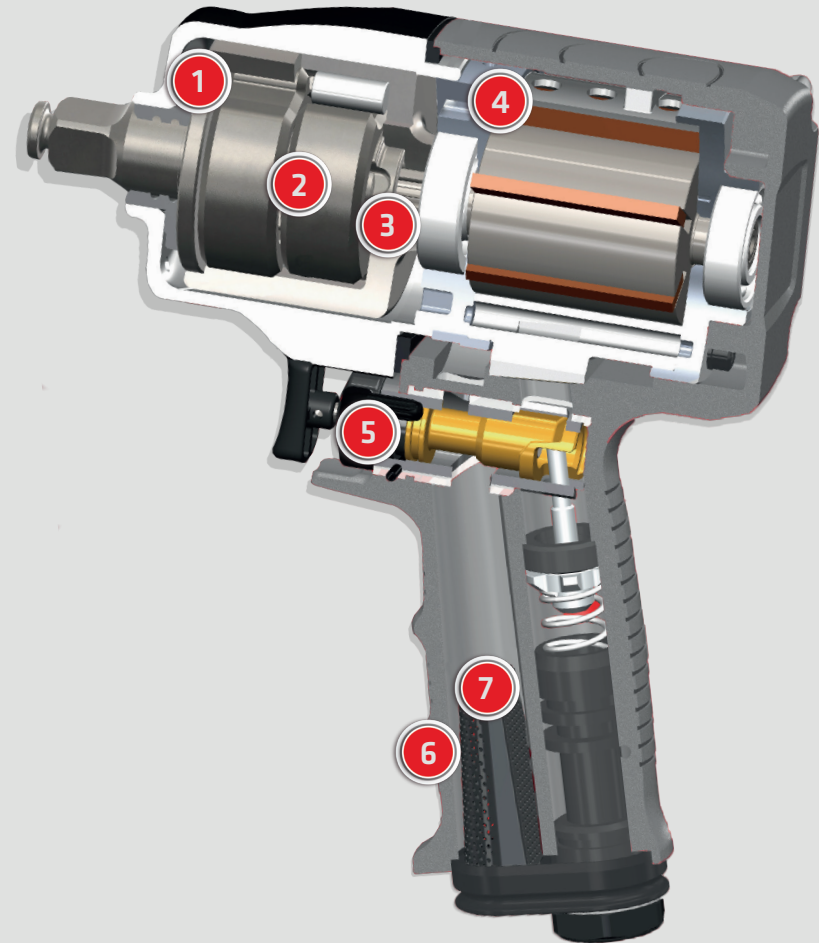
Fast torque development

For impact wrenches, a high power build-up in the shortest possible time is important. For this reason, our SWEFACT™ industrial impact wrenches have been developed to quickly reach their required working torque.



Structure & Features

- 1 Impact cover plate prevents the grease from escaping and thus reduces the usual wear.
- 2 Innovative, powerful SWEFACT™ impact mechanism reduces wear and vibration.
- 3 The newly developed, spring-loaded and concentric guide reduces the transmission of vibrations from the impact mechanism to the impact wrench.
- 4 The motor assembly is mounted with through bolts. The design eliminates component misalignment, reduces wear, prevents motor air loss and increases performance.
- 5 The patented combined forward/backward/directional switch mounted on the trigger allows convenient one-hand operation.
- 6 The ergonomic soft handle assures optimized operator comfort.
- 7 The integrated silencer reduces the noise level to 85 dB(A).

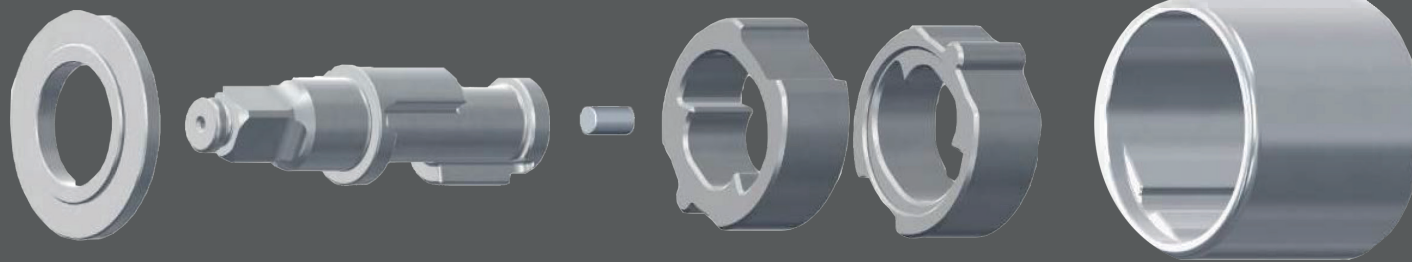


SWEPACT™ impact mechanism

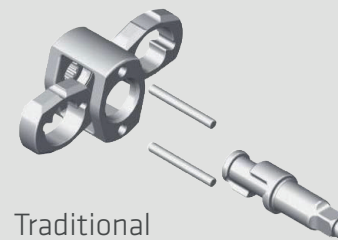
The cover plate seals the impact mechanism housing and prevents the grease from escaping.

The anvil is driven by the twin hammers.

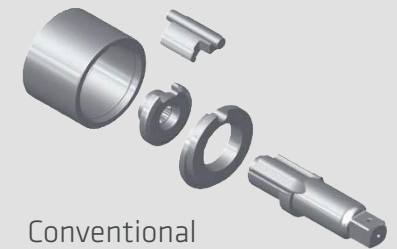
The hammers are driven via the impact mechanism housing.



The guide pin connects the anvil to the vane motor, ensuring perfect concentricity.



Traditional twin-hammer impact mechanism



Conventional Pin-less impact mechanism

The story

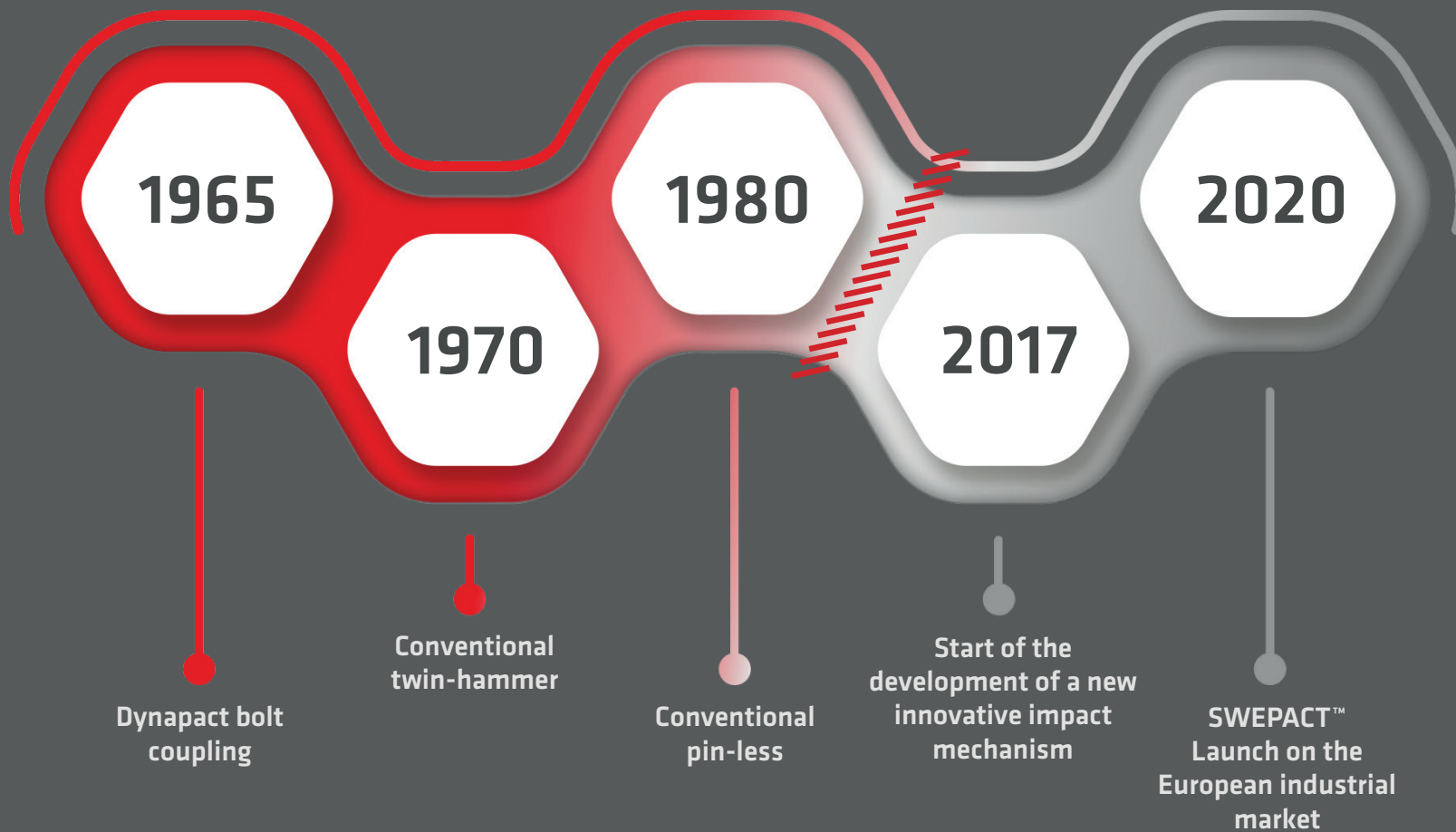
From the pin coupling to the innovative **SWEFACT™** impact mechanism

The history of striking tools began 55 years ago. In 1965 the Dynapact pin coupling was designed. The double hammer impact mechanism (Twin-Hammer) was only evolved in the 1970s and 10 years later the pin-less impact mechanism was developed and produced.

Over the past decades, all tool manufacturers have used almost exclusively the twin hammer (usually with 1/2", 3/4" and 1" square drive) and the pin-less hammer (with 1/2" and 1" square drive). The tool manufacturers copy each other and technically the impact mechanisms differ only in geometry, materials and size. When developing the new SWEFACT™ impact mechanism, we were inspired by the positive technical features of the double hammer impact mechanism (including high torque) and the bolt-less impact mechanism (including fast torque build-up) and on the basis of this, we developed a completely new impact mechanism and added further technical innovations of our own. This impact mechanism is only integrated in our SWEFACT™ industrial impact wrenches. This gives our SWEFACT™ impact wrenches a unique selling point on the international industrial market.

*Double hammer impact mechanism (Twin-Hammer), pin-less impact mechanism (Pin-less)







Applications and industries

Versatile application areas of the SWEFACT™ industrial impact wrenches

Maintenance and assembly work

Due to their long service life and low maintenance requirements, the SWEFACT™ industrial impact wrenches are ideally suited for continuous and intensive use in the maintenance and assembly sector. The user is relieved by the special vibration and noise reduction as well as the optimized ergonomics and can work fatigue-free.

entwischte Führung reduziert die Vibration

Tightening & loosening screw connections

Application examples:

- General maintenance
- Vehicle construction
- Retooling of machines
- De- & assembly work



(Petro-)Chemical sector



Metal construction



Mechanical engineering



Environmental technology



Pharmaceuticals



Recycling



Nonwovens & textiles



Beverage industry



Paper & packaging industry



Wood industry



Oil and gas industry



Agricultural industry



Food industry



Steel industry



Automotive industry



„ONLY THOSE WHO TEST OUR **SWEPACT**[™] IMPACT WRENCHES
WILL UNDERSTAND WHAT WE ARE TALKING ABOUT!”

Test the **SWEPACT™** industrial impact wrenches

Trial

You can test almost all our products under real conditions in your production for 14 days without obligation. During the test phase you have no administrative work. If the product does not fit your application, we will be happy to offer you suitable alternatives on request. We will have the products that are not required collected from you.

TEST NOW FOR FREE:



+ 49 (0) 2131 / 75 22 100

You have questions or need individual advice?

We will gladly help you!

Monday - Thursday: 08:00 bis 17:00
Friday: 08:00 bis 15:00

+ 49 (0) 2131 / 75 22 100
info@swepro.com
www.swepro.com



Free trial agreement

Select impact wrench, mark for free trial, dispatch free trial.



Delivery

Our messenger will deliver the required products to you, conveniently and free of charge.



Test without obligation

Convince yourself of our industrial impact wrenches for 14 days.

Pick up

We will pick up the industrial impact wrenches that are not required from you again free of charge.





Swedex GmbH Industrieprodukte

Im Taubental 10 | D-41468 Neuss

Telefon +49 (0) 21 31 7522 100

Telefax +49 (0) 21 31 7522 210

E-Mail info@swepro.com

www.swepro.com

